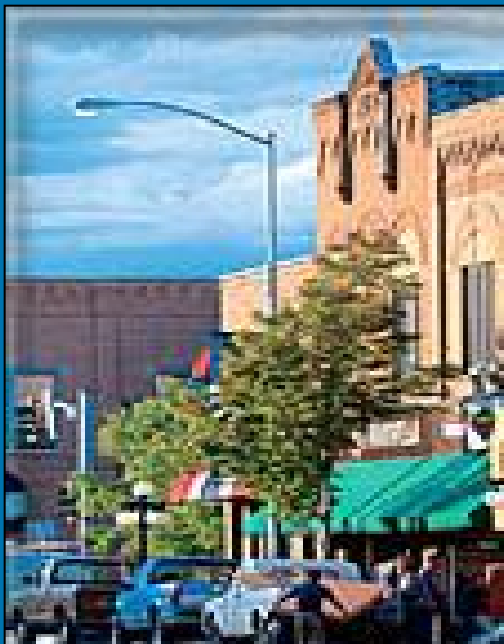
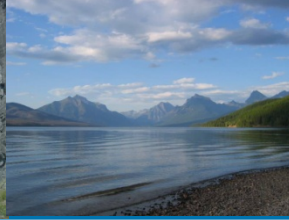




Crown Managers
Partnership



Transboundary Collaboration in the Crown of the Continent



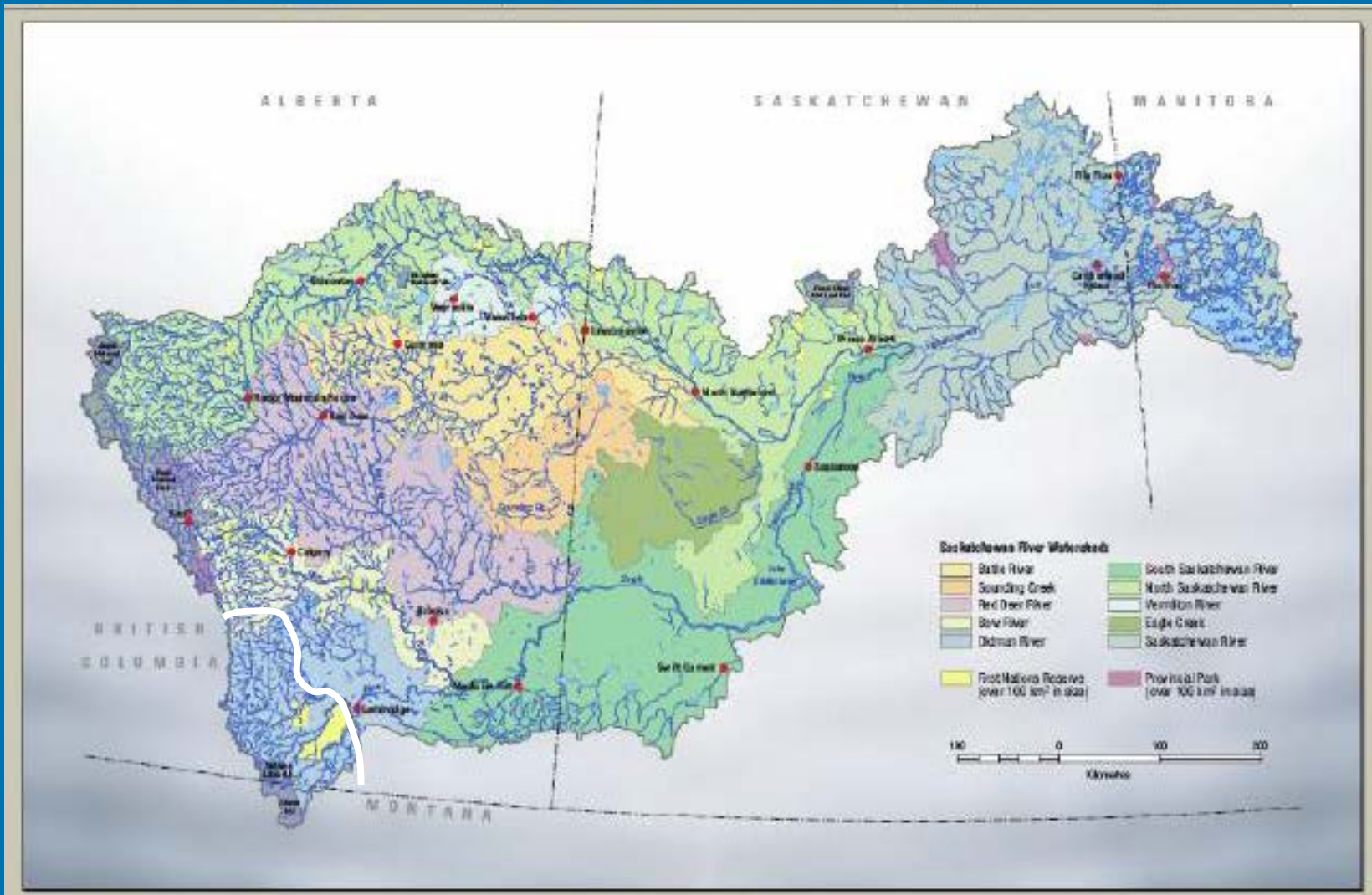
Crown Managers Partnership

A forum for promoting collaboration amongst agencies managing natural resources:

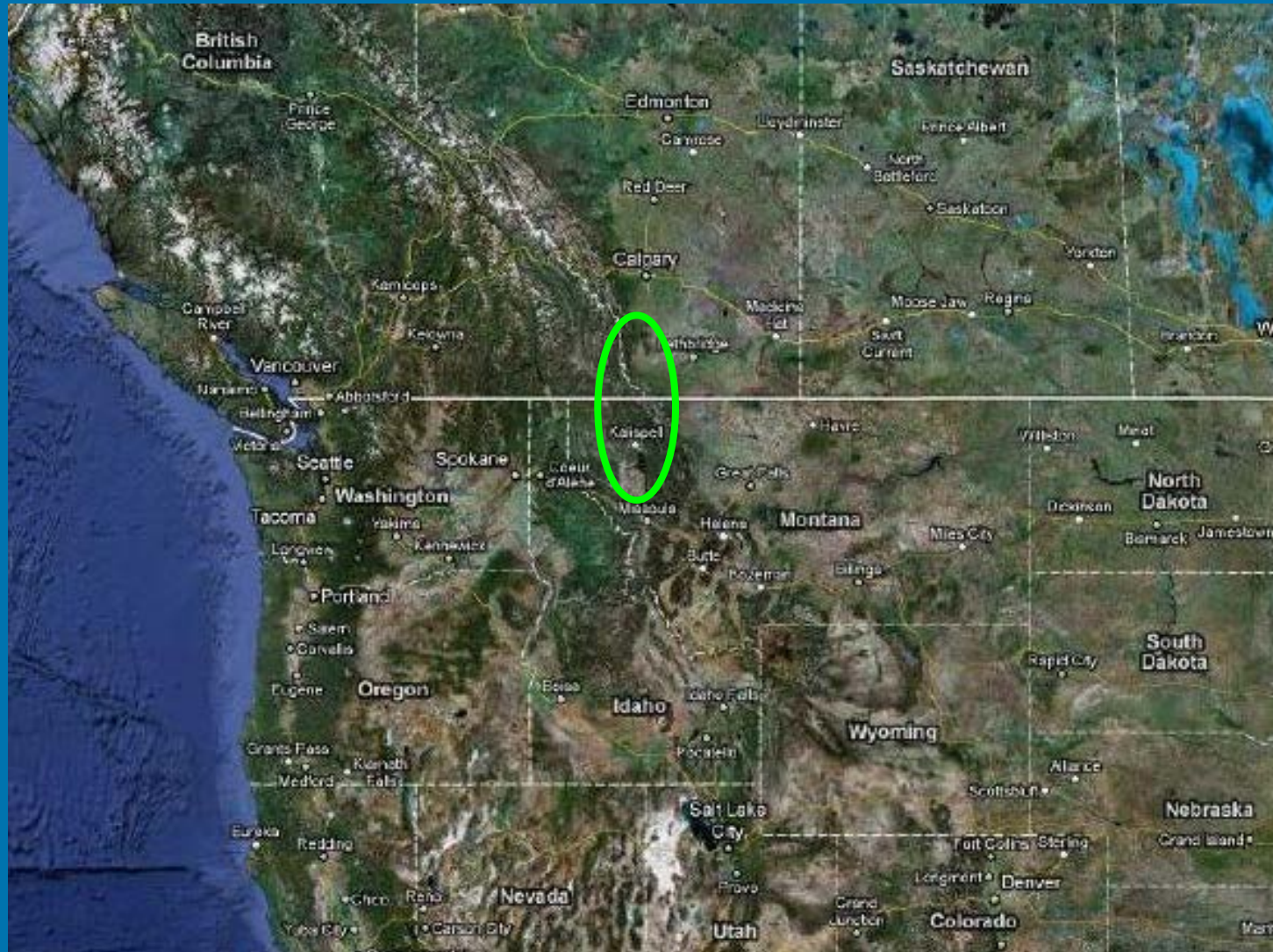
- Montana
- Alberta
- British Columbia
- Federal , Tribal/First Nations, State, Provincial
- Voluntary
- Agencies Manage, CMP provides a framework



Not Just Another Place...

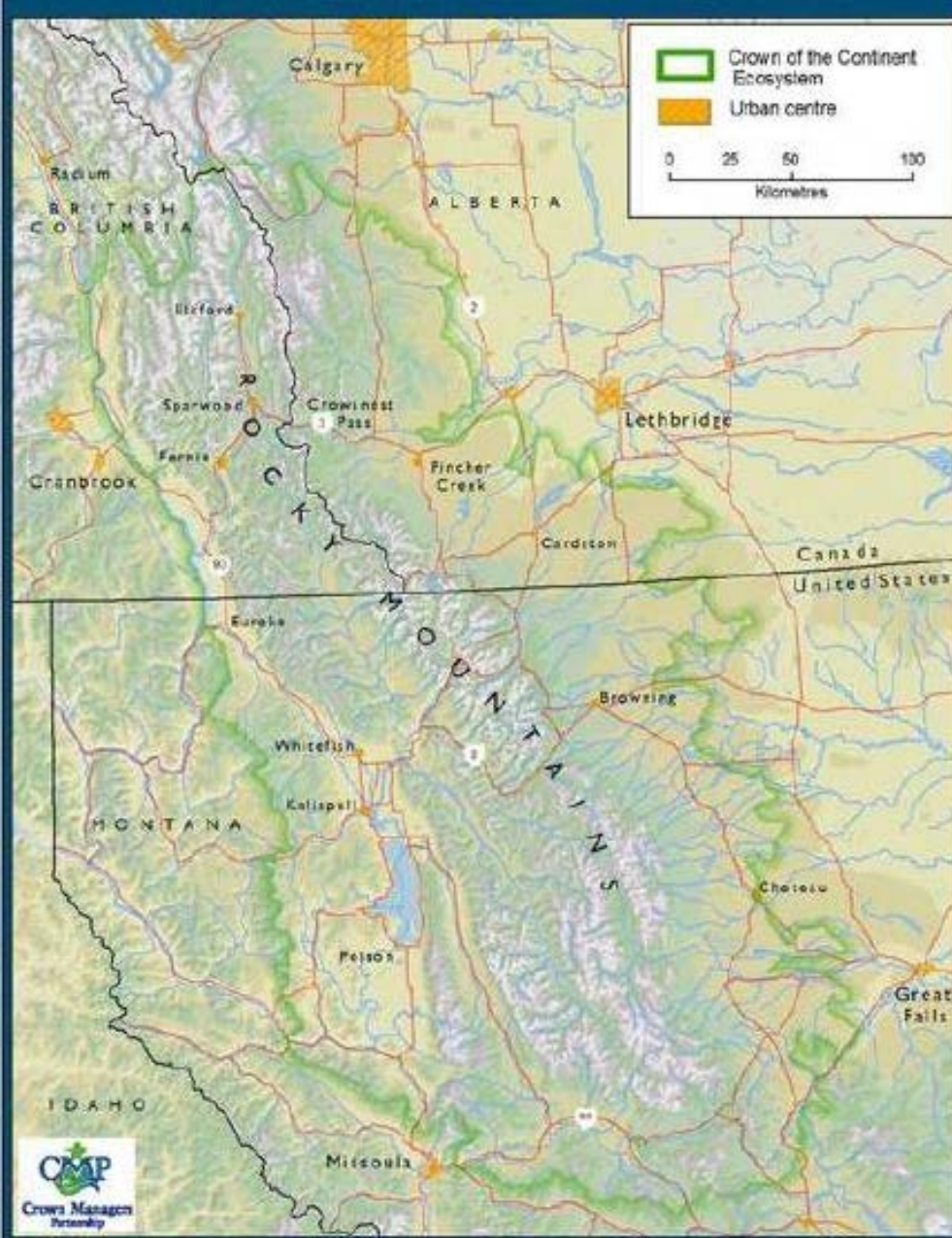


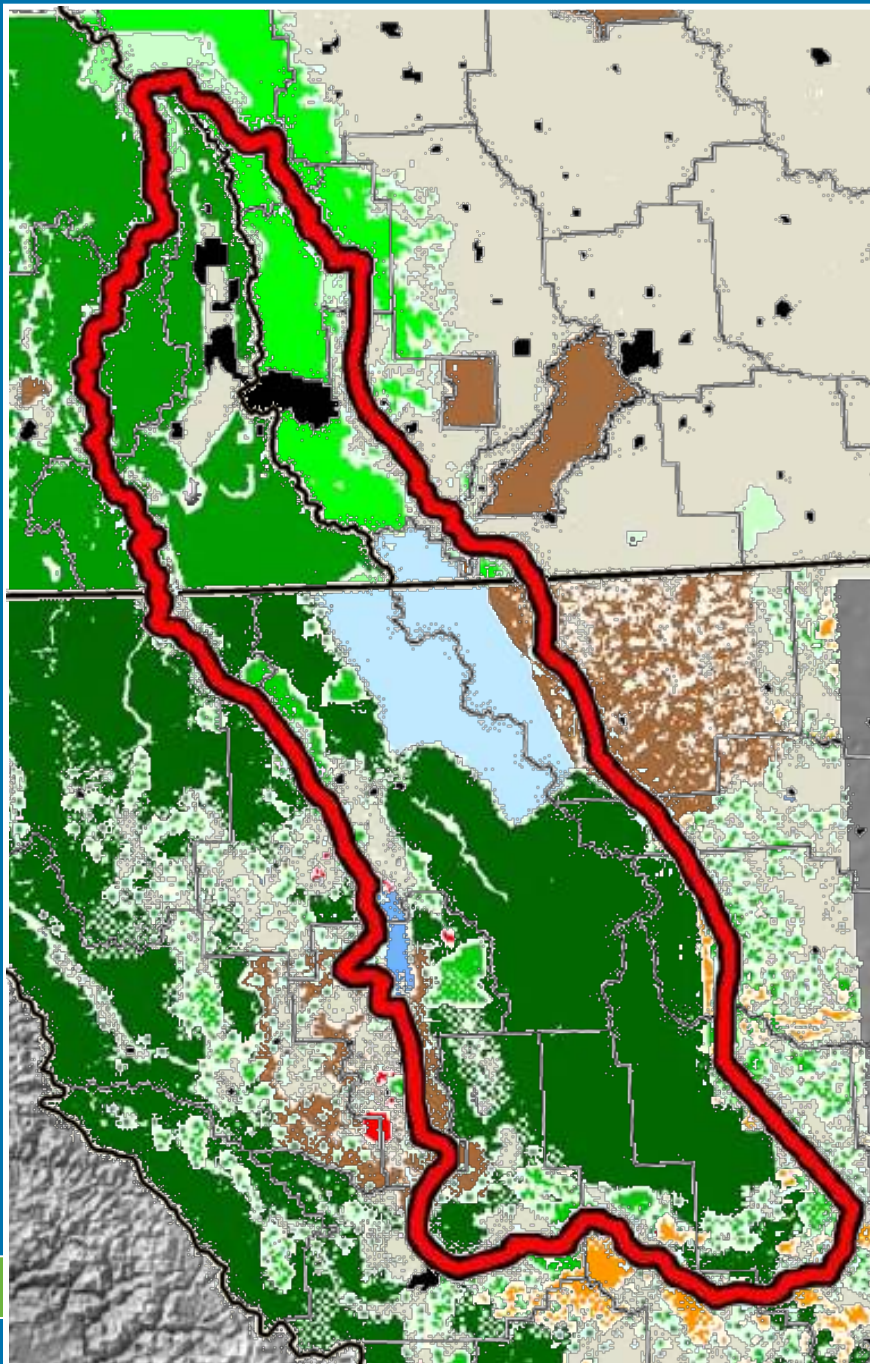
Not Just Another Place...



Crown of the Continent Ecosystem

- Large, intact ecosystem
- High profile setting
- Unique attributes
- Peace Park
- Intl. designations





First Nation / Tribal Lands
Parks Canada / U.S. National Parks Service
B.C. Ministry of Environment
Alberta Tourism, Parks and Recreation
B.C. Ministry of Forests
United States Forest Service
Alberta Sustainable Resource Development
United States Fish and Wildlife
Montana DNRC (State Forests)
U.S. Bureau of Land Management
Private Land
Counties / MDs / Regional Districts
Cities / Towns / Villages

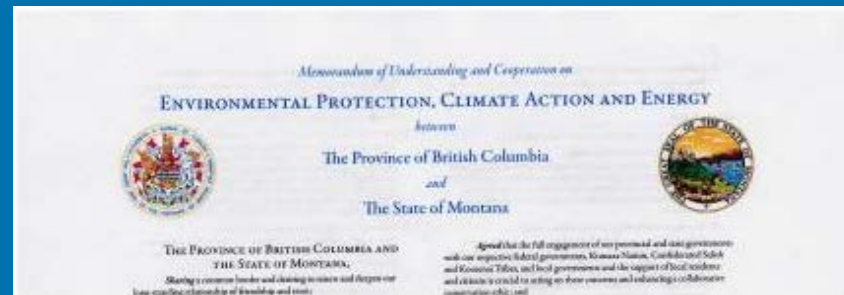
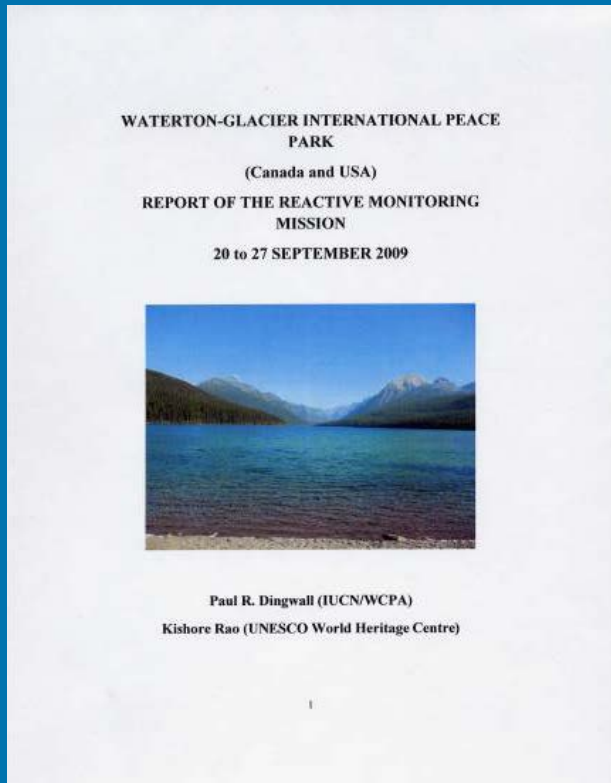
Jurisdictional Complexity

IUCN/UNESCO attention

The Flathead watershed: a shared resource.



“There is, in the view of the mission, no possibility of proceeding with mining in the Flathead watershed without creating an unacceptable direct impact on the Outstanding Universal Value of the property, and there does not appear to be a compromise position in this regard.”



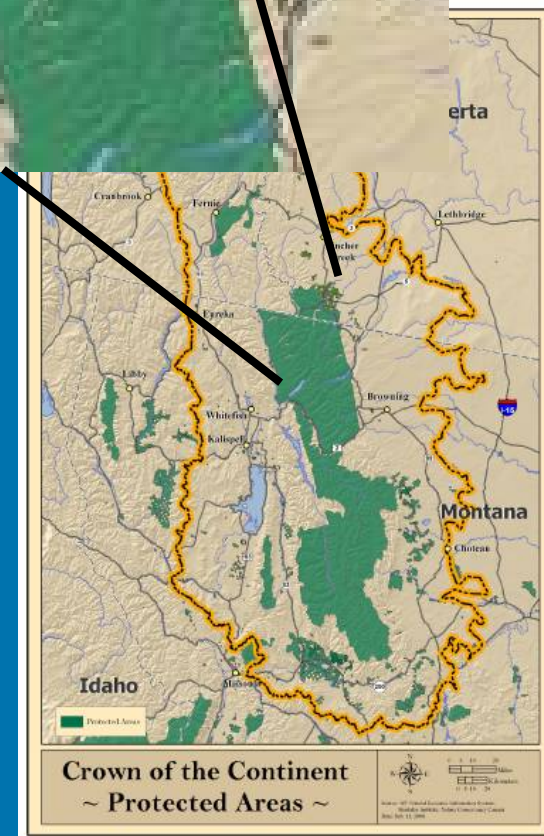
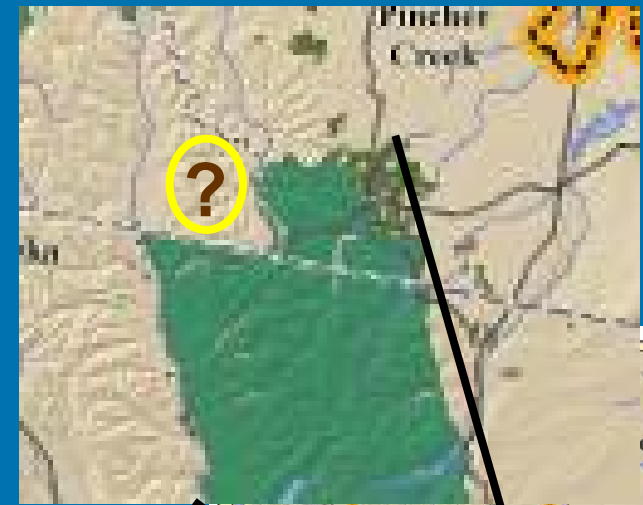
The New York Times

British Columbia Vows Ban on Mining, Drilling Near Glacier National Park



B.C. Hot Spot

- Natural resource economy
- Recreational pressures
- Elk Valley mining
- Protected Areas Agenda



Montana Hot Spot

- Bipartisan Political Support
- Existing Protected Areas
- Rocky Mountain Front
- North Fork Preservation Act
- Subdivision



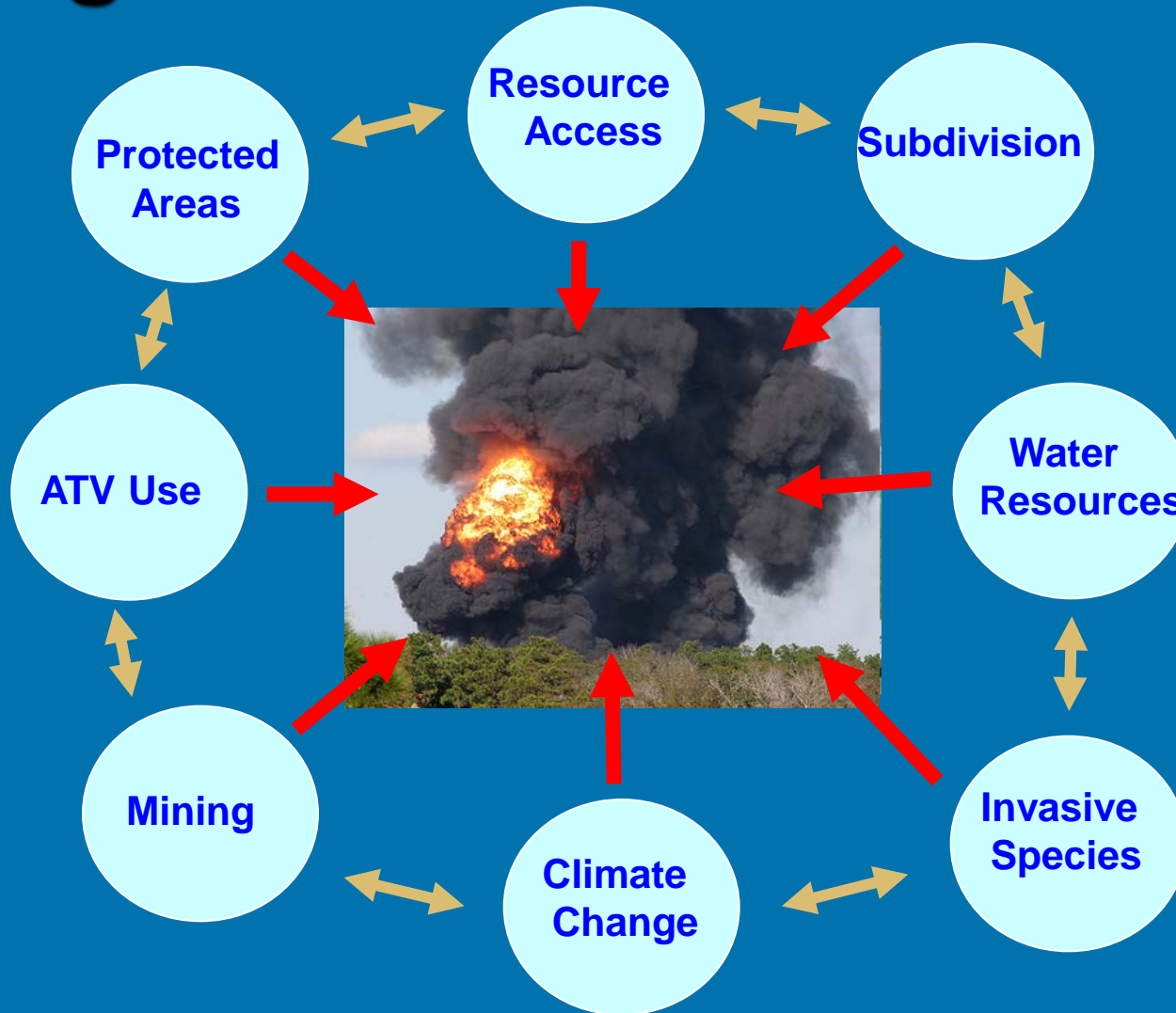
Alberta Hot Spot



Crown Pressures

- Climate Change
- Invasive weeds
- Fire Management
- Urban and rural residential development
- Tourism and recreational use
- Resource use and extraction
- Environmental Quality
- Water Quality, quantity, fisheries, aquatics
- Wildlife habitat – fragmentation and loss
- Degradation of ecosystem goods and services

Linkages and Liabilities



Environment does not Recognize Jurisdictional Boundaries



Crown Managers Partnership Genesis

20th Century:

- International Peace Park



21st Century:

- A broader partnership



Crown Managers Partnership History

- Feb 2001, Cranbrook: Trans-boundary collaboration
- April 2002, Whitefish: Cumulative Effects
- April 2003, Pincher Creek: ALCES
- Feb 2004, Cranbrook: Fire
- March 2005, Kalispell: Invasive plants
- March 2006, Lethbridge: Watershed Partnerships
- March 2007, Cranbrook: Ecological Health
- March 2008, Whitefish: Carnivores
- Feb 2009, Pincher Creek: Biodiversity
- April 2010: Fernie: Climate Change



CMP Modus Operandi

Structure:

- Cooperative agency partnership (CMP doesn't manage, agencies do)
- Participants: federal state and provincial agencies, tribes and First Nations, educational institutions
- Steering Committee

Guidance:

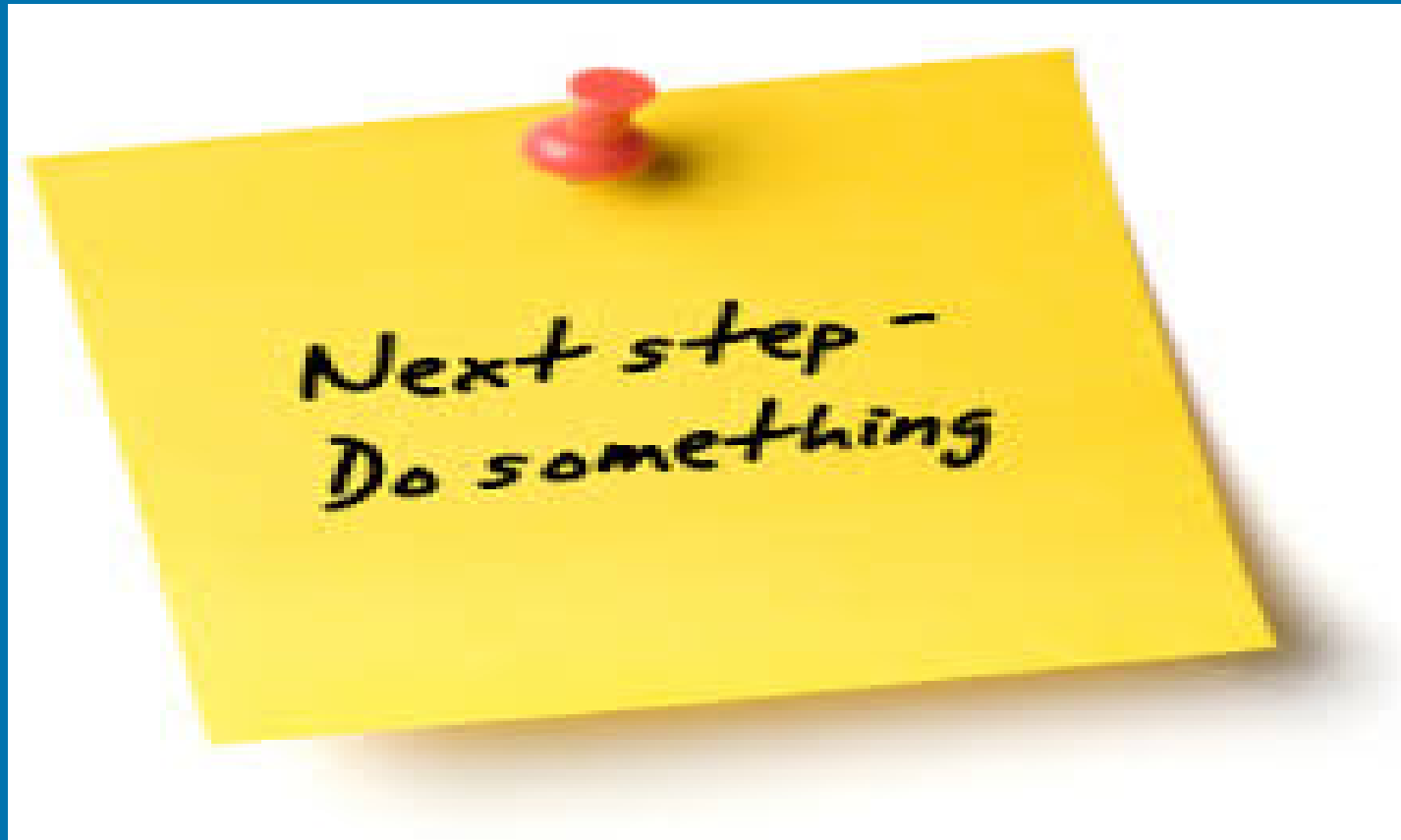
- MOU
- Strategic Plan
- Annual Work Plan
- Annual Forums

Indicators of Ecological Health

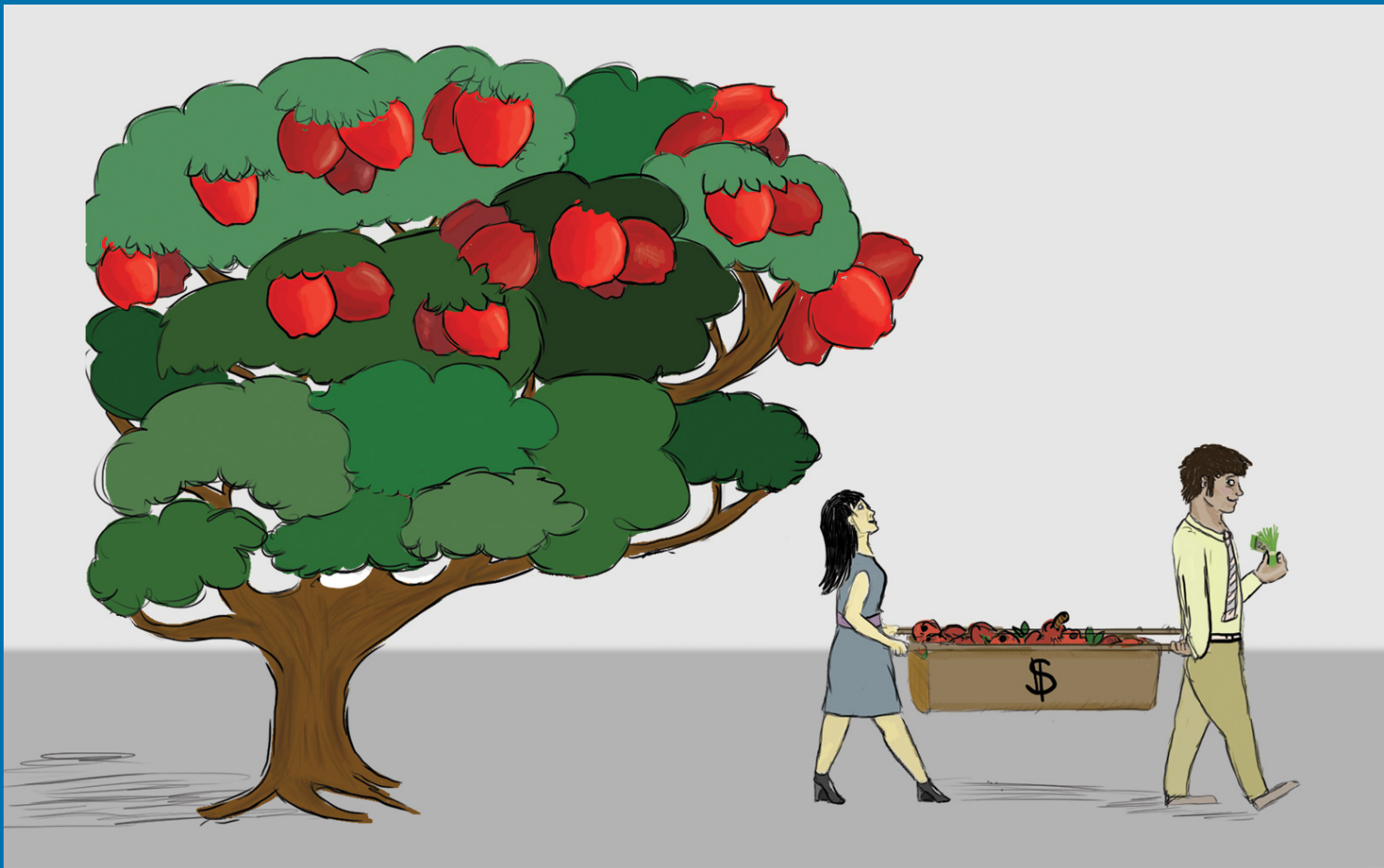
- Landscape
- Biodiversity
- Water quality/quantity
- Invasive Species
- Climate
- Air quality
- Cultural



Implementation



Aquatic Invasive Species



Aquatic Invasive Species Indicators

Invasive Mussels



Invasive Plants (EWM)



CMP AIS Strategy

- Fix the “weakest link”
 - No program in AB in 2012
 - By 2013, pilot program launched with:
 - Ministerial Order
 - 1-800-hotline
 - Monitoring
 - Education
 - Inspections



Transboundary AIS Protocol

- Prevention
- Detection
- Response
- Education

Aquatic Invasive Species

Threatening the

Crown of the Continent



Focus Group Testing



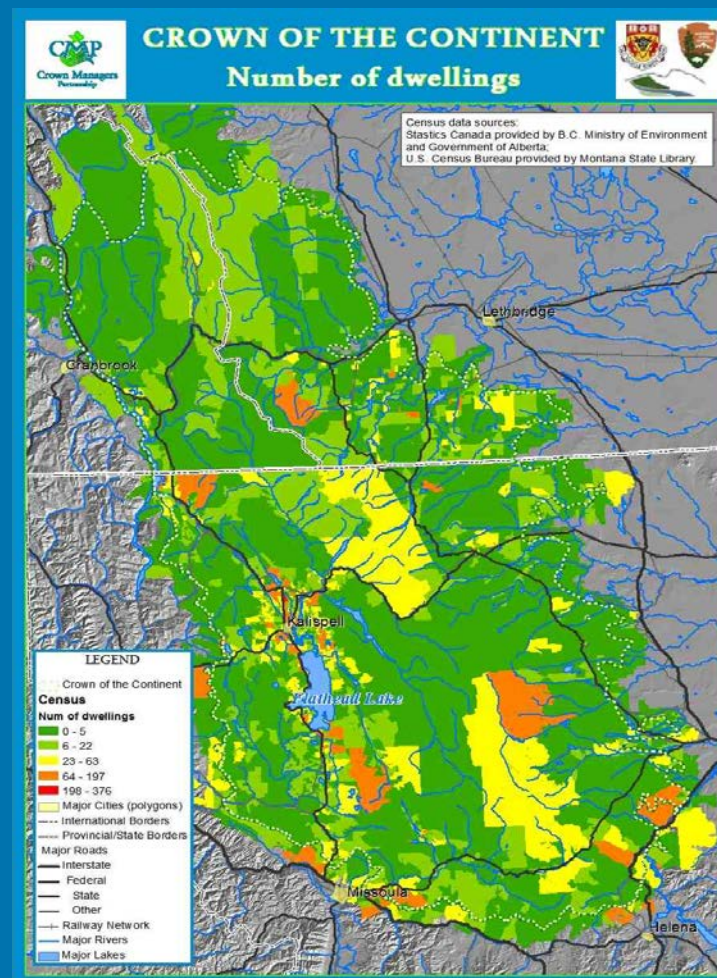
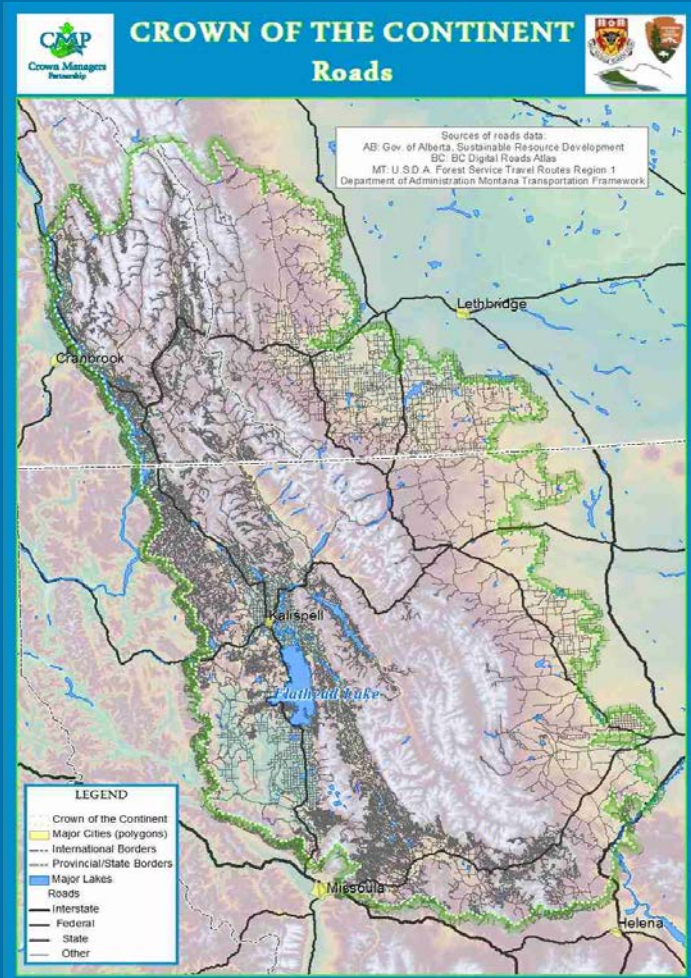
CMP Collaboration with GNLC: Perimeter Defense



Unique Opportunities



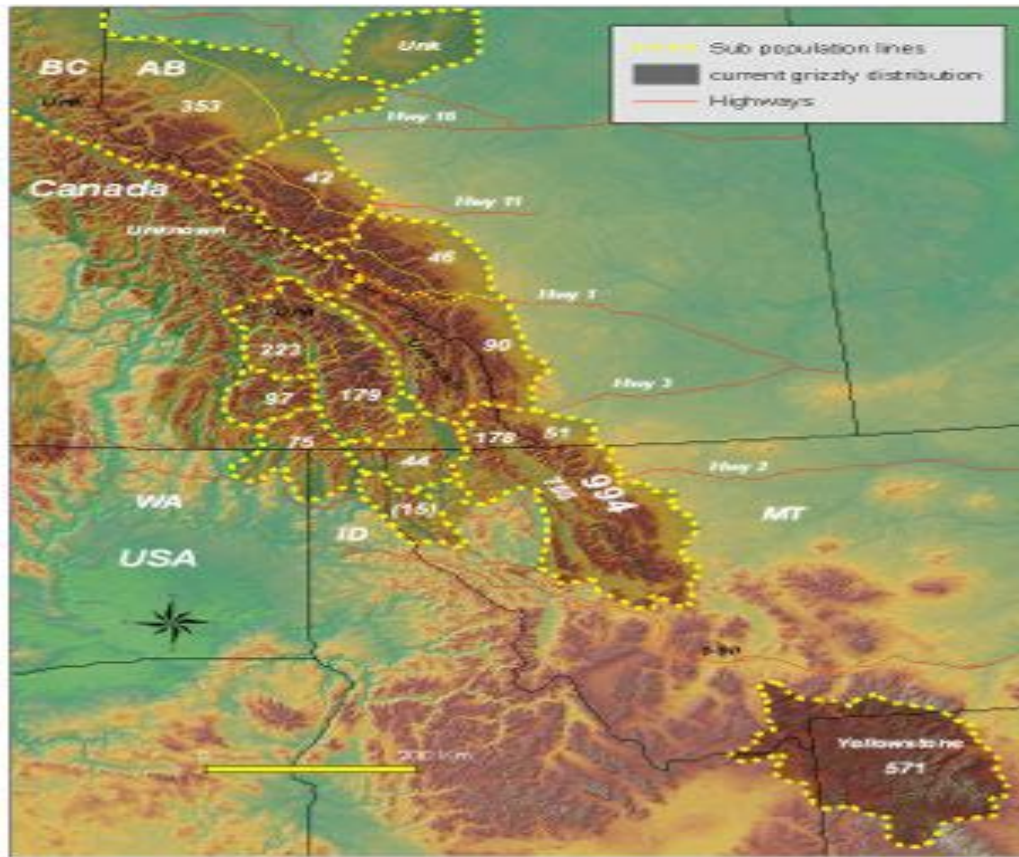
Landscapes Indicator



Landscape Indicator



Grizzly Bear Distribution



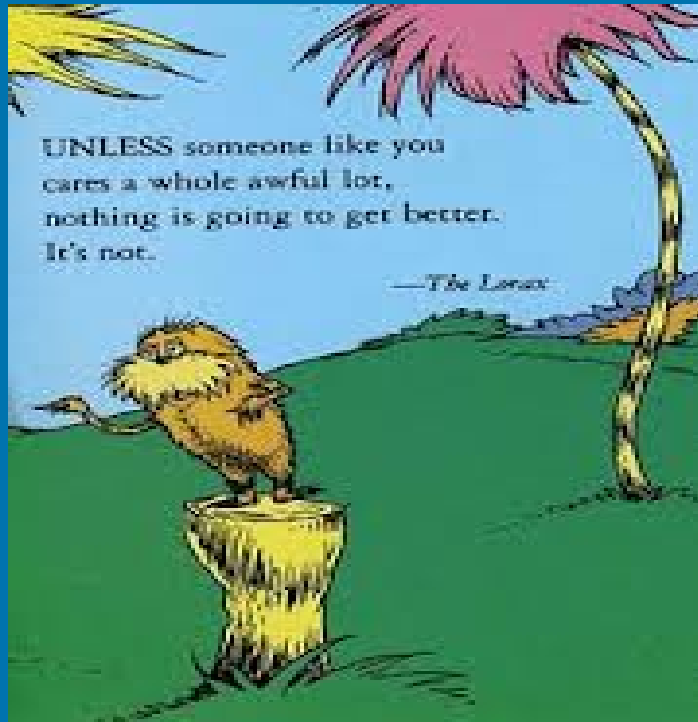
Fragmentation



Benefits of Collaboration



Managing Across Boundaries





The End

